

N Z S P I R I T S

VODKA	
Blue Duck Rare, Auckland	15
Karven 'Starka' Barrel Aged, Matakana	13
Cadrone Distilleries 'The Reid' , Cardrona	16
Scapegrace, Christchurch	14

GIN	
Liberty Soho Dry	
Black Robin Rare, Auckland	14
Scapegrace 'Classic', Christchurch	15
Scapegrace 'Gold', Christchurch	18
Scapegrace 'Black', Christchurch	17
The Source, Cardrona	18
The Source 'barrel aged', Cardrona	22
Blush, Auckland	15
Strange Nature, Marlborough	16
Liberty Gins, Manhattan Rose/Tribeca Lime	15

RUM	
Karven Spiced Rum, Matakana	13
Mc Jaggery White, Auckland	16
Nz Rum Co. Spiced	16
Grenada Bay Gold, Wellington	16
Russel Spiced Rum, Auckland	15
Helmsman White, Auckland	13

WHISKEY	
Thomsons Two Tone Whiskey, Riverhead	13
Thomsons South Island Peat 'Progress Report', Riverhead	17
Scapegrace Dimension, Single Malt, Christchurch	25
Cardrona Falcon, Single Malt, Cardrona	40
Cardrona Pinot noir, Single Malt, Cardrona	50
Cardrona Sherry, Single Malt, Cardrona	50
Waiheke Whiskey, Honey and Rye	18
Waiheke Whiskey, Fair Light	18
Waiheke Whiskey, Oak and Rye	18
Waiheke Whiskey, Peat and Port	25

C O C K T A I L S

French 75	23
1919 gin, lemon, Allan Scott 'Cecilia' bubbles	
Whiskey Sour	23
Thomson two-tone whisky, lemon, Angostura, whites	
Negroni	25
Bitter aperitif, island 144 vermouth, 1919 gin	
Manhattan	26
Thomson two-tone whisky, island 144 vermouth	
Mai Tai	24
Karen Spiced Rum, Orgeat, Triple Sec, Lime	
Espresso Martini	22
Vodka, Coffee Liqueur, Espresso	

N O N - A L C O H O L I C

Little Jimmy Soda's BY THE GLASS (ADD A SHOT \$10)	13
Blueberry, PassionFruit, Lychee, Raspberry	
Karma Drinks -	12
Cola, Lemmy Lemonade, Cola Sugar Free, Lemon Lime and Bitters	
Juices -	10
Apple, Orange, Pineapple, Cranberry, tomato and spiced tomato	
Ginger Beer	14
Otakiri Mineral Water Still & Sparkling	14

L I T T L E J I M M Y

Our drinks menu is a short list of carefully selected Kiwi producers. What's more is that we support the little guy by using New Zealand products sourced from smaller kiwi businesses trying to make their mark.

We may not always stock the products that you are looking for, but our staff would love to show you something new and are always happy to tailor make an exceptional experience to suit your needs.

-
New Zealand
Thirst Quenchers
-

- M O R N I N G ' T I L N I G H T -

LITTLE
JIMMY
BAR & EATERY



-
D R I N K

Please note there is a 2% surcharge for all
credit card and paywave transactions

THE
EMPIRE
B L O G S .
E P S O M

P H 0 9 6 2 3 3 2 1 3

S P A R K L I N G

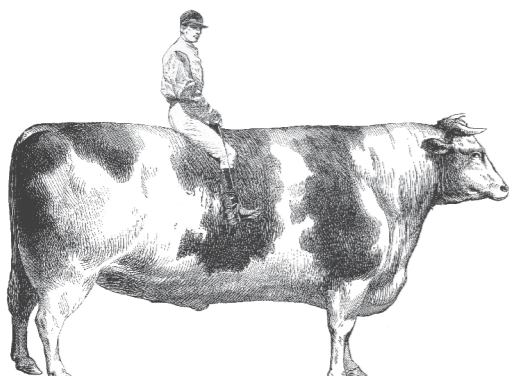
	GLS	BTL
Allan Scott ‘Cecilia’ Cuvee NV, <i>Marlborough</i> Wild strawberries and stone fruit flavours abound with a long lasting and creamy finish.	19	88
Elephant Hill Sparkling Rose, <i>Hawkes Bay</i> Refined Strawberry and rockmelon, with a grapefruit finish	17	83
Quartz Reef Method Traditionelle Brut, <i>Central Otago</i> Green apple, creamy acidity, hints of brioche, crisp		110

W H I T E

	GLS	BTL
Satellite Sauvignon Blanc, 24, <i>Marlborough</i> Aromatic with Citrus, sweet kaffir lime with hints of herbs	15	70
Peregrine Sauvignon Blanc, 24, <i>Central Otago</i> Aromas of feijoa, lemon zest and elderflower	18	85
Deep Down Sauvignon Blanc, 23, <i>Marlborough</i> Zesty gooseberry, elderflower and fresh herbs	18	85
Spy Valley Pinot Gris, 23, <i>Marlborough</i> Flavours of red apple, nashi pear and spice, fresh and vibrant	16	75
Q Pinot Gris, 23, <i>Waitaki Valley</i> Sweet style aromas of white peach and sweet ginger	18	85
Odyssey Chardonnay, 24, <i>Hawkes Bay</i> Loads of mature stone fruit, sweet citrus, hint of oak	16	75
Te Kano Chardonnay, 22, <i>Central Otago</i> White peach, melon, toasted coconut, vanilla	23	110
Heaphy Chardonnay, 24, <i>Nelson</i> Citrus, peach, and hints of oak, light bright, fruity	18	85
Matawhero Chenin Blanc, 24 <i>Gisborne</i> Stonefruits, honeysuckle, Bright acidity, lovely texture		85
Little Jimmy 0% Blanc, 24 0% wine, fresh and light, with a saviour undertone	14	

R O S E

	GLS	BTL
Two Rivers Rose, 24, <i>Marlborough</i> Melon, and berries with a dry elegant chalky texture	18	83
Summerhouse Rose, 24, <i>Marlborough</i> Bright strawberries with a lush but crisp finish	14	65
Little Jimmy 0% Rose, 24 0% ros'e with fresh fruity notes, fresh and crisp	14	



R E D

	GLS	BTL
Saddleback Pinot Noir, 23, <i>Central Otago</i> Luscious, silky dark fruits with soft, supple tannins	18	52 ^{500ML}
Mondillo Pinot Noir, 24, <i>Central Otago</i> Elegantly structured, supple dark fruit + floral aromas.	25	120
Greystone Nor'Wester Pinot Noir, 23, <i>North Canterbury</i> Complex nose of red fruits, baking spice and floral notes		85
Soho Revolver , Merlot Melbec, Petit Verdot, 22, <i>Waiheke Island</i> Soft, silky, mineral-edged fruit flavour. red berries, lush	18	85
Margrain Home Block, Pinot Noir, 21, <i>Martinborough</i> Quince jelly, soft licorice allsorts with blackberry aromas		130
Man O' War Dreadnought Syrah 21, <i>Waiheke Island</i> Dark and glossy with blackberry, pepper and spice		140
Elephant Hill Syrah, 20, <i>Hawkes Bay</i> Classic Hawkes Bay syrah, rich, spicy with dark cherries	19	88
Brookfields Sun dried malbec, 23 <i>Hawkes Bay</i> Rich and intense, malbec on steroids	16	75
Te Mata Cabernets Merlot 23, <i>Hawkes Bay</i> Plum, blackberry + cassis with cedar .		70
Puriri Hills Estate Mer/Cab/Mal, 20, <i>Clevedon</i> Fullbodied. Blackcurrant, plums and spice. Organic		150



L I T T L E J I M M Y

Proudly Supporting NZ Products & Producers

B E E R O N T A P

TAP	400ML
Little Jimmy , Lager, 4%, <i>Auckland</i> A crisp pale lager with some fruity notes	14
Liberty Halo, Pilsner, 5% , <i>Auckland</i> Fruity, crisp and incredibly drinkable	15
Liberty Peach Az, Alcoholic peach soda, 4% <i>Auckland</i> Light, bright, tropical, crisp and sessionable, peachy	14
Liberty , Juice Bro, Hazy Pale Ale 5%, <i>Auckland</i> Tropical, full flavoured, soft malt, citrusy pomelo, sessionable	15

K I W I C R A F T B E E R S

McLeods Pioneer, Brown Porter, 5.5%, <i>Waipu</i> 5 malts, burnt caramel, coffee and chocolate	13
Hallertau #1 Low Carb, Lager, 4.5%, <i>Auckland</i> Soft hops, dry finishes	13
Sawmill Bare Beer, Pale Ale, 0.5%, <i>Matakana</i> Big on hops, very small on booze	11
McLeods Lager, 5%, <i>Waipu</i> Light gold colour with ripe melon and stone fruit aroma	13
Liberty Knife Party, IPA, 7.1%, <i>Auckland</i> Crisp, dry and hoppy. A hop lovers dream.	15
Sawmill Bright IPA, 5.5%, <i>Matakana</i> Fresh, fruity, with tropical aromas, and generous hops	13
Garage Project “Tiny” 0%, <i>Wellington</i> Big flavours, no booze.	12
McLeods Northern Light, Lager, 2.3%, <i>Waipu</i> Fresh, well balanced, sessionable	12
Duncan's , Yuzu Lager, 4.7%, <i>Paraparaumu</i> Dry stlye larger, with a citrus twist	16
Duncan's , Whippy IPA 6.3%, <i>Paraparaumu</i> Creamy and troipcal, with notes of vanilla, and mango lassi	17

C I D E R

Hallertau Apple Cider 5.1%, <i>Auckland</i> Crisp, refreshing, blue skies and cut grass	13
MorningCider Strawberry and Peach Cider 4.9%, <i>Auckland</i> strawberry, peach, light fun and fresh (its pink)	12
Liberty Peach Az, Alcoholic peach soda, 4% <i>Auckland</i> Light, bright, tropical, crisp and sessionable, peachy	14
Isthmus Pineapple & Lime , Sour, 3.8% <i>Auckland</i> Fresh, Sour, and fruity, with a creamy finish	16